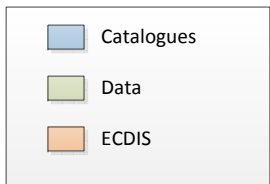
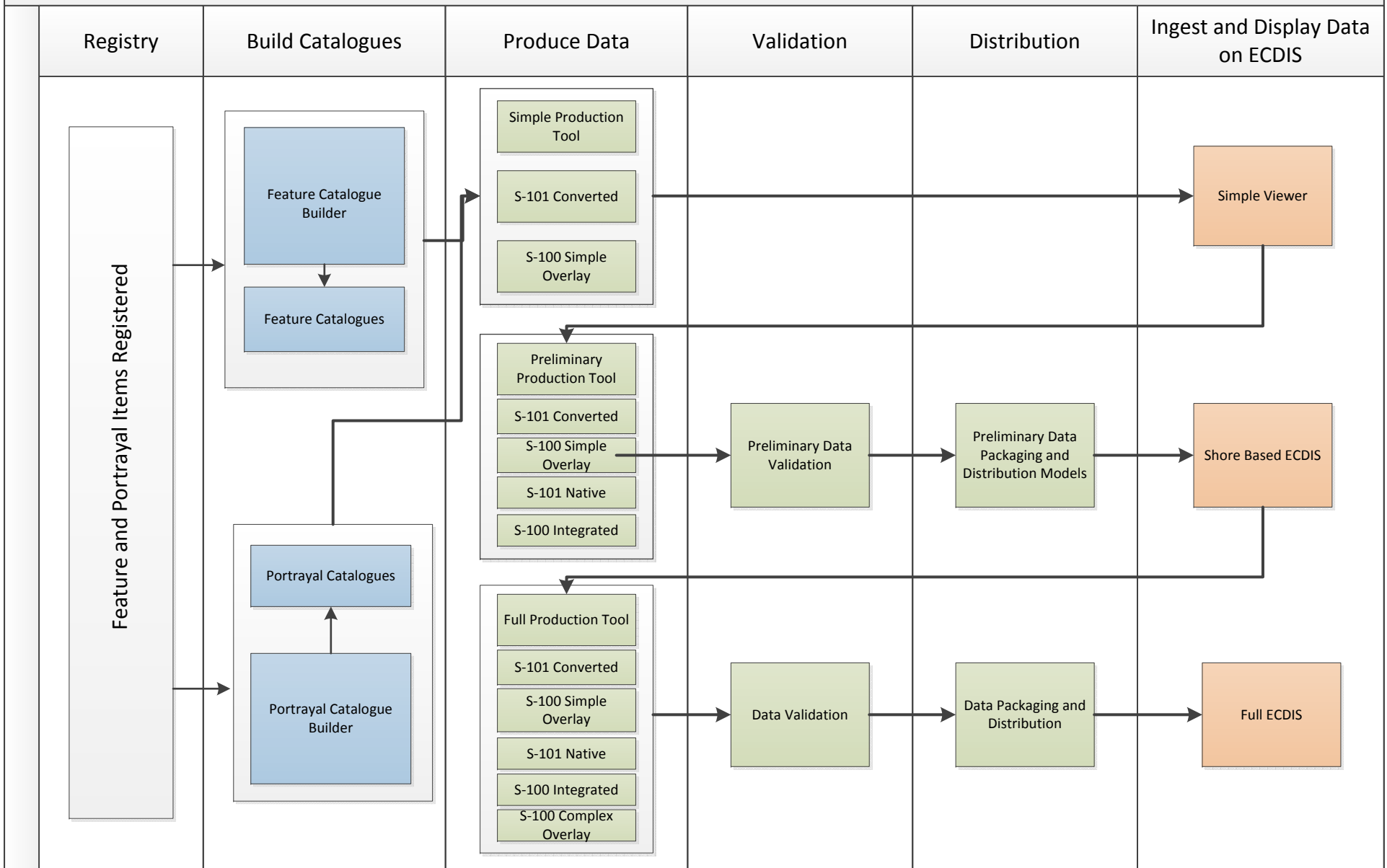


# S-100 System Overview



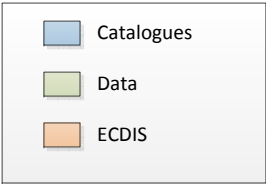
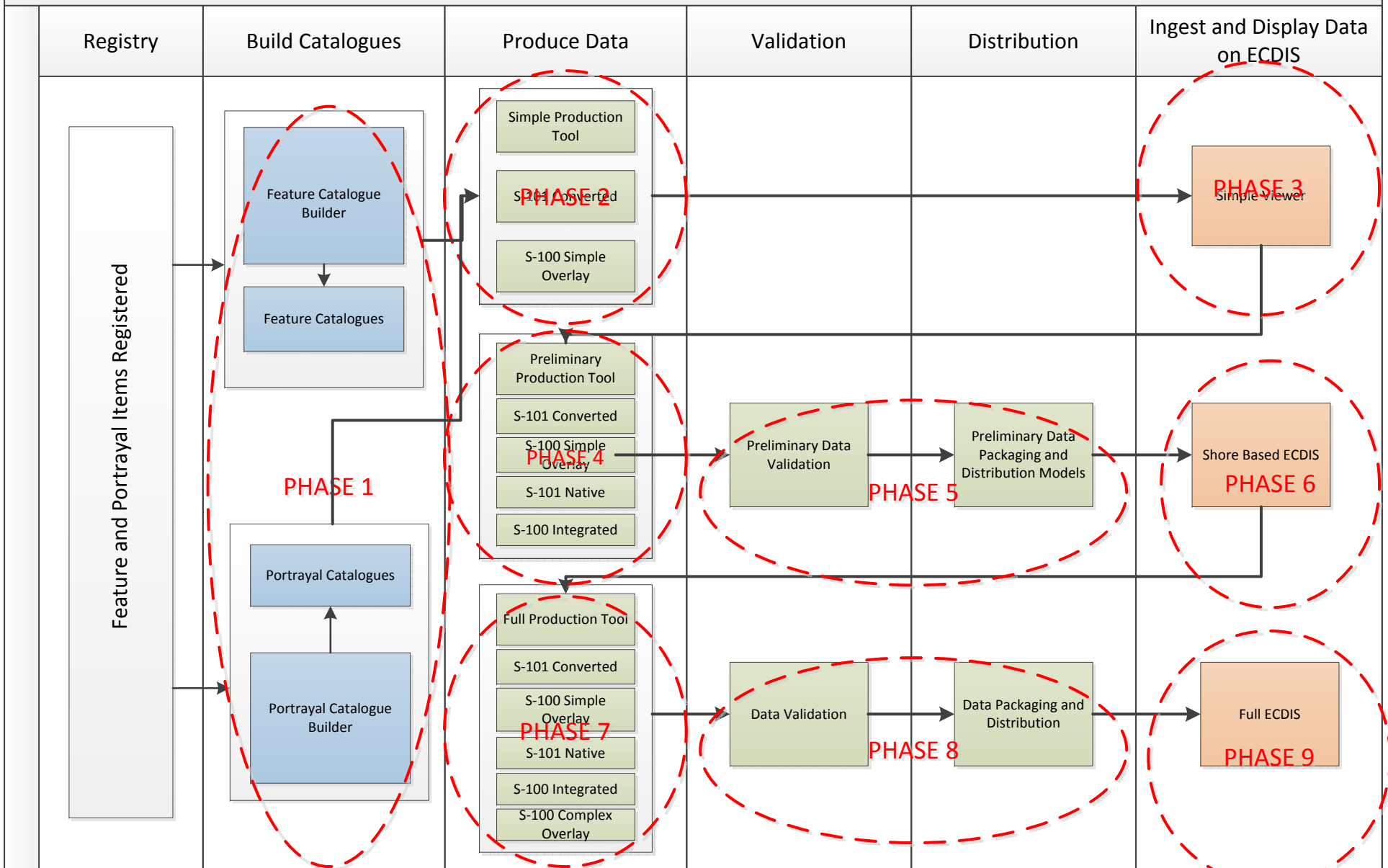
**Notes:**

- There is a detailed activity diagram for each box in the diagram
- Feature and Portrayal Catalogues feed into each aspect of the system
- Feature Catalogues feed into both the production and display of data
- Portrayal Catalogues feed primarily into the display of data
- S-100 Integrated means that there may be a partial replacement of the underlying base S-101 data. For example, an S-102 bathymetric dataset may replace part of the base ENC for navigation purposes
- There are potentially two types of overlays – a simple overlay that sits on top of the base data, or a more complex overlay that interacts directly with the base dataset.

**STANDARDS**

- S-100
- S-101
- S-10X
- IEC 61174
- IMO

# S-100 System Overview



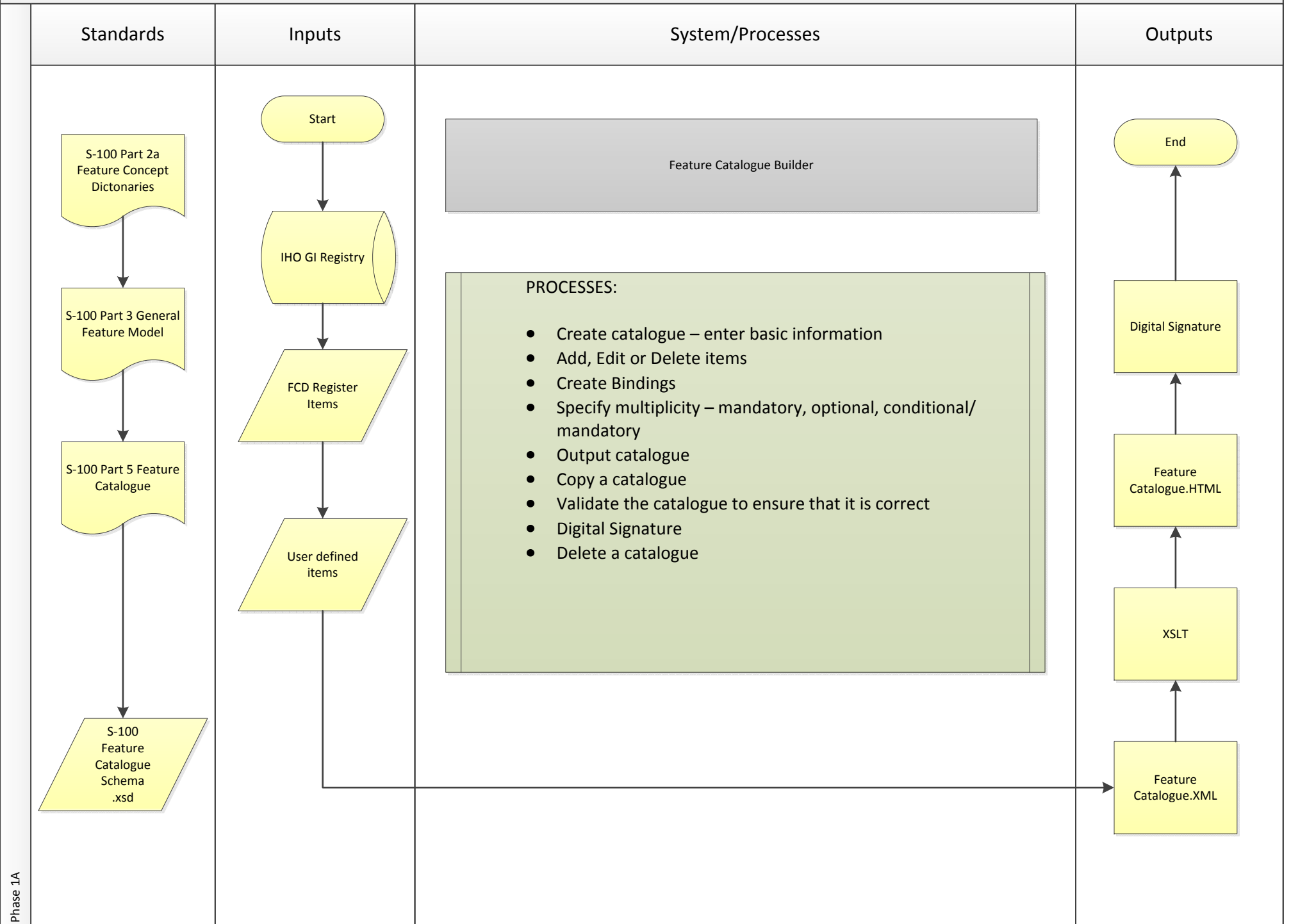
**Notes:**

- There is a detailed activity diagram for each box in the diagram
- Feature and Portrayal Catalogues feed into each aspect of the system
- Feature Catalogues feed into both the production and display of data
- Portrayal Catalogues feed primarily into the display of data
- S-100 Integrated means that there may be a partial replacement of the underlying base S-101 data. For example, an S-102 bathymetric dataset may replace part of the base ENC for navigation purposes
- There are potentially two types of overlays – a simple overlay that sits on top of the base data, or a more complex overlay that interacts directly with the base dataset.

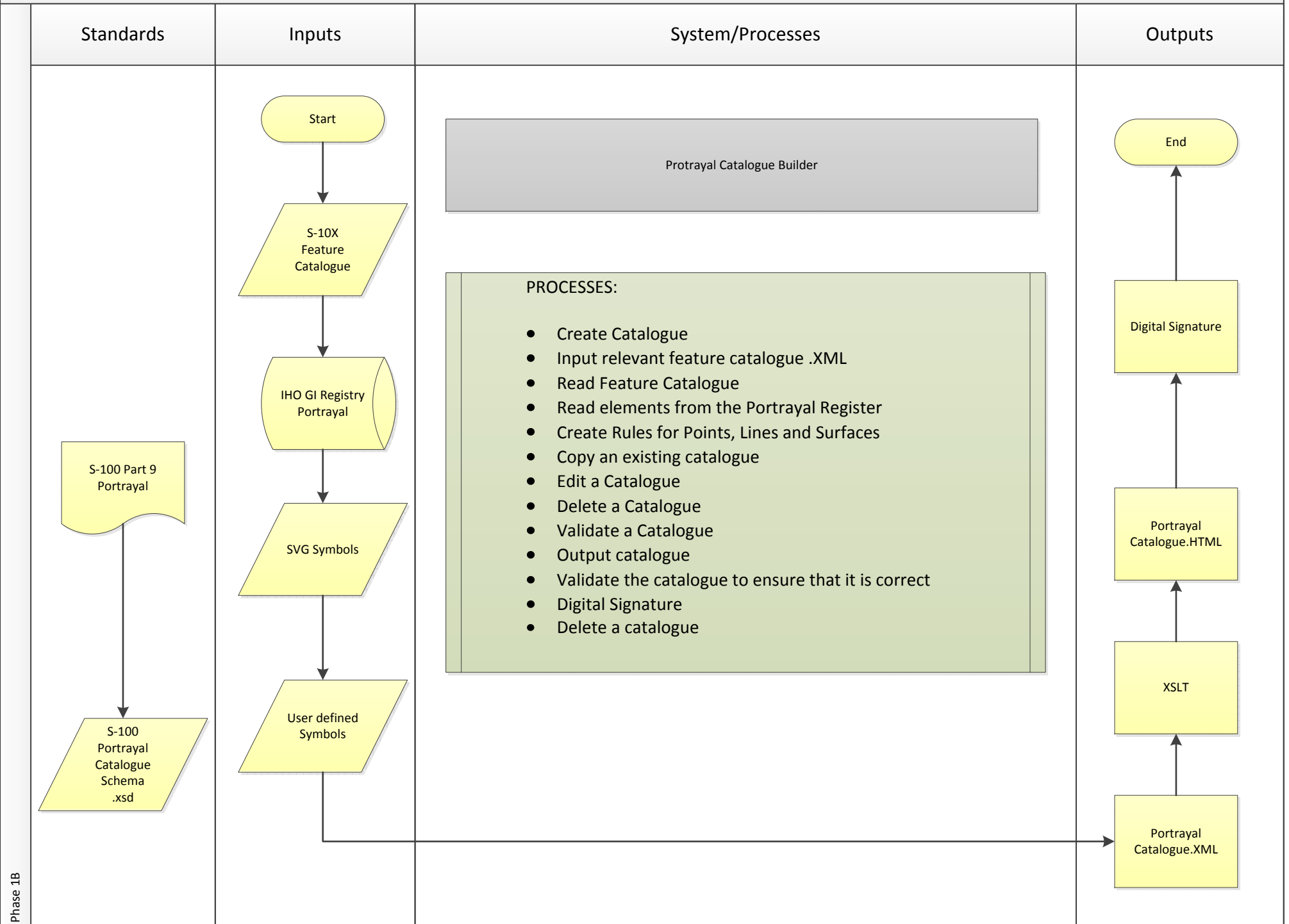
**STANDARDS**

- S-100
- S-101
- S-10X
- IEC 61174
- IMO

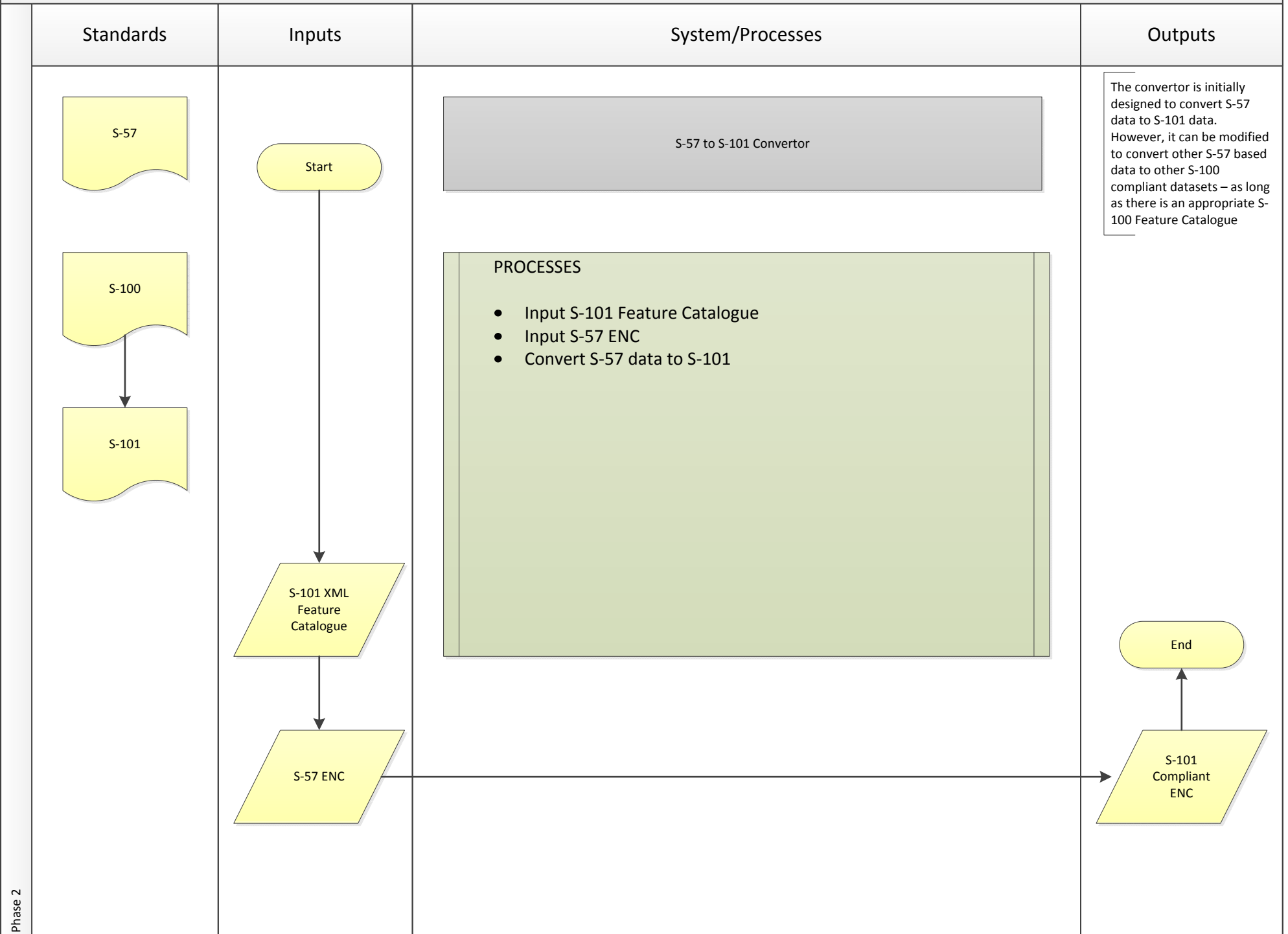
# Feature Catalogue Builder Systems View



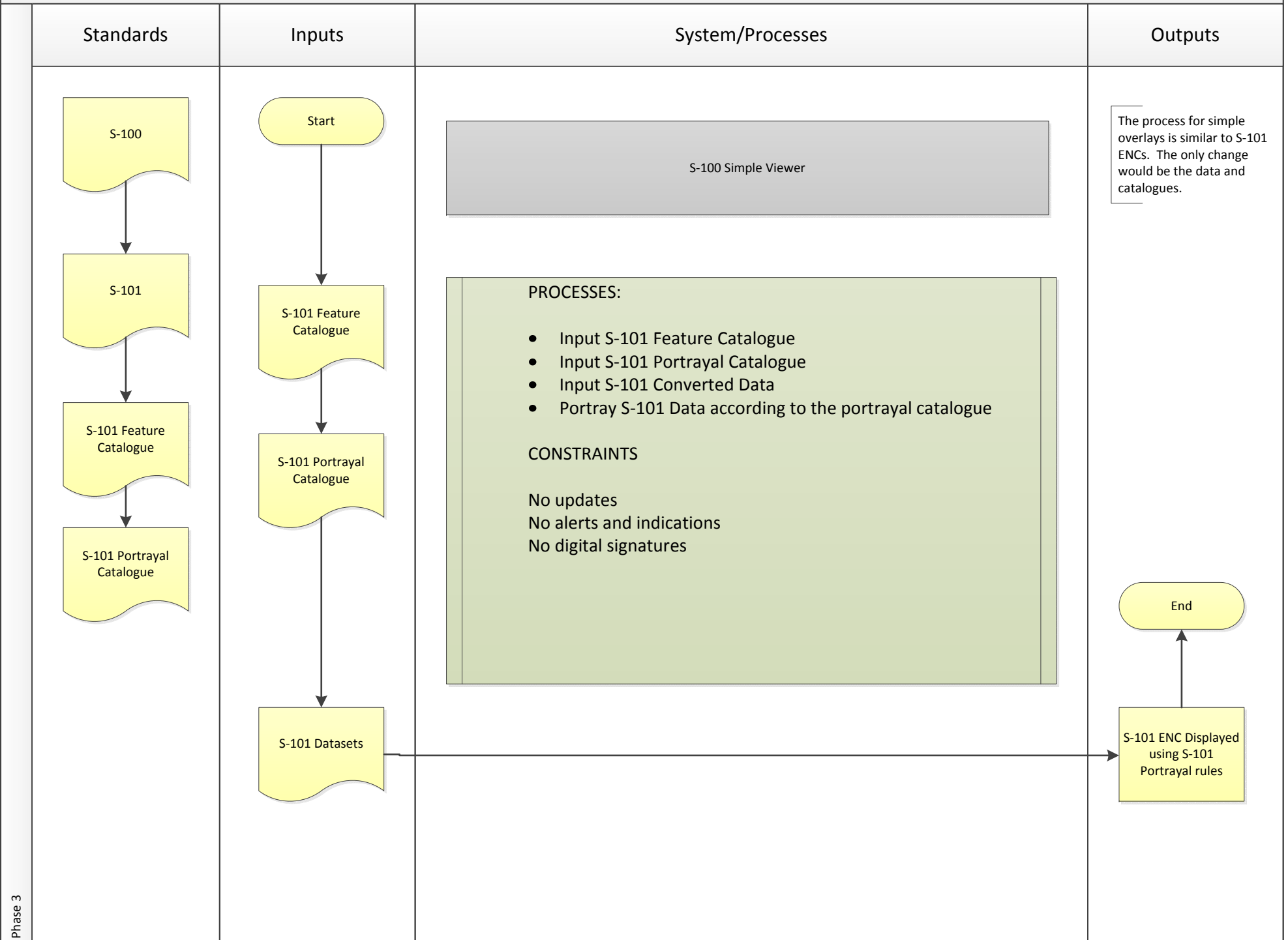
# Portrayal Catalogue Builder Systems View



# S-57 to S-10X Converted Data



S-100 Simple Viewer



Preliminary Production Tool

Standards	Inputs	System/Processes	Outputs

Phase 2C

Preliminary Data Validation

Standards	Inputs	System/Processes	Outputs



Preliminary Distribution

Standards	Inputs	System/Processes	Outputs

Shore Based ECDIS

Standards	Inputs	System/Processes	Outputs

Full Production Tool

Standards	Inputs	System/Processes	Outputs



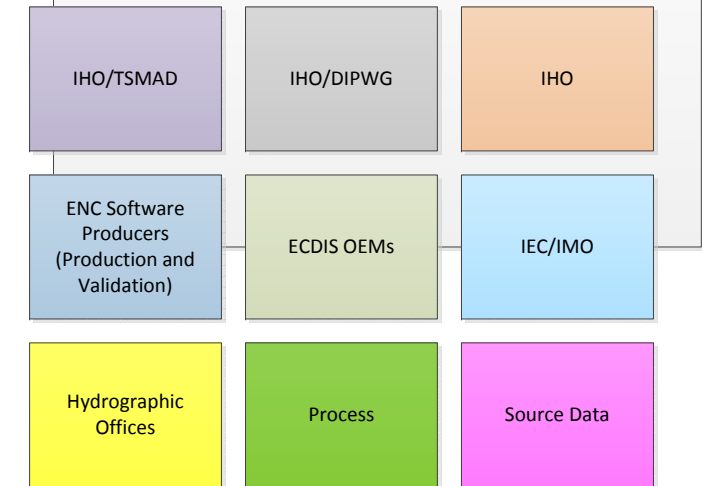




S-100/S-101 System Testing			
	Valid Catalogues Produced	Valid ENC is Sent	ECDIS Meets User Requirements
Who/What	IHO/TSMAD Build and Maintain Catalogues	Hydrographic Offices Produce S-101 ENCs and S-101 Exchange Sets (ES)	ECDIS OEMs Build S-100 ECDIS
Input Data	S-101 DCEG Feature Register Items Feature Catalogue (XML) Portrayal Rules (LUT) Portrayal Register Items	S-57 ENC Source Data Catalogues S-101 ENC	Valid S-101 Exchange Set
Output Data	Feature Catalogue (XML) Portrayal Catalogue	S-101 ENC (Converted) S-101 ENC (Native) Valid S-101 ES Valid S-101 ENC	
System	Feature Catalogue Builder (UKHO) Portrayal Catalogue Builder (IHO Contract)	S-101 Convertor S-101 Production Software S-101 Validation Software	S-100 ECDIS
System Standards	S-100 Part 5 Feature Catalogues S-100 Part 9 Portrayal S-100	S-101 Product Specification S-101 Feature Catalogue S-100 S-101 Data Classification and Encoding Guide (DCEG subgroup) S-101 Feature Catalogue S-101 Product Specification S-101 Validation Checks (S-58)	
System Requirements			IMO Performance Standard
System Testing	S-100 Test Data (S-101 ENCs, Ess, S-10X data) S-100 and S-101 Test Scenarios + Cases Test Plan IHO Testing and Validation	Testing Enforced through Validation S-101 Validation Test Data Validation Tool Accreditation	IEC Test Standards IHO Test Data (S-64) ECDIS Type Approval

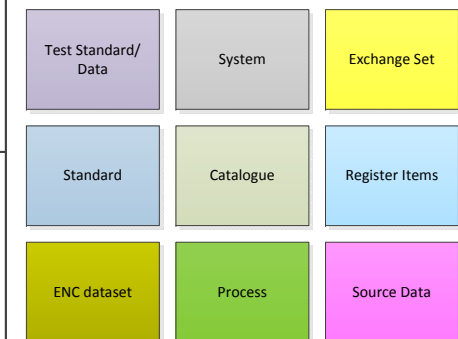
### Colour Coding for diagram

Text convention *italics* mean components which have been developed but are incomplete, **bold** text indicates items which have been tested and are complete. Underline indicates items not started. Unstyled text are items which are in development.



S-100/S-101 System Testing				
	Register	Valid Catalogues Produced	Valid ENC is Sent	ECDIS Meets User Requirements
Who/What	IHO/TSMAD Maintain IHO S-100 Registry	IHO/TSMAD/DIPWG Build and Maintain Catalogues	Hydrographic Offices Produce S-101 ENCs and S-101 Exchange Sets (ES)	ECDIS OEMs Build S-100 ECDIS
Input Data	Proposals	S-101 DCEG Register Items Feature Catalogue (XML) Portrayal Rules (LUT) Register Items	S-57 ENC Source Data Catalogues S-101 ENC	Valid S-101 Exchange Set
Output Data	Approved Items	Feature Catalogue (XML) Portrayal Catalogue	S-101 ENC (Converted) S-101 ENC (Native) Valid S-101 ES Valid S-101 ENC	
System	IHO GI Registry FCD Register Portrayal Register	Feature Catalogue Builder (UKHO) Portrayal Catalogue Builder (IHO Contract)	S-101 Convertor S-101 Production Software S-101 Validation Software	S-100 ECDIS
System Standards	S-100 Part 2 Management of IHO GI Registers S-100 Part 2a Feature Concept Dictionary Registers S-100 S-99	S-100 Part 5 Feature Catalogues S-100 Part 9 Portrayal (DIPWG) S-100	S-101 Product Specification S-101 Feature Catalogue S-100 S-101 Data Classification and Encoding Guide (DCEG subgroup) S-101 Feature Catalogue S-101 Product Specification S-101 Validation Checks (S-58)	
System Requirements				IMO Performance Standard
System Testing		S-100 Test Data (S-101 ENCs, Ess, S-10X data) S-100 and S-101 Test Scenarios + Cases Test Plan IHO Testing and Validation	Testing Enforced through Validation S-101 Validation Test Data Validation Tool Accreditation	IEC Test Standards IHO Test Data (S-64) ECDIS Type Approval

**Colour Coding for diagram**  
Text convention *italics* mean components which have been developed but are incomplete, **bold** text indicates items which have been tested and are complete. Underline indicates items not started. Unstyled text are items which are in development.





S-100/S-101 System Testing				
	Register	Valid Catalogues Produced	S-10X Datasets	ECDIS Meets User Requirements
Who/What	IHO/TSMAD Maintain IHO S-100 Registry	IHO/TSMAD/DIPWG Build and Maintain Catalogues	Depending on the nature of the dataset it could be hydrographic offices, weather services, etc. Produce S-10X Products	ECDIS OEMs Build S-100 ECDIS
Input Data	Proposals	S-101 DCEG Register Items Feature Catalogue (XML) Portrayal Rules (LUT) Register Items	Source Data Catalogues S-10X Datasets	Valid S-101 Exchange Set
Output Data	Approved Items	Feature Catalogue (XML) Portrayal Catalogue	S-10X Simple Overlays (ICE, MPA, Weather) S-10X Complex Overlays (Partial ENC replacement, S-102) Valid S-10X ES Valid S-10X Product	
System	IHO GI Registry FCD Register Portrayal Register	Feature Catalogue Builder (UKHO) Portrayal Catalogue Builder (IHO Contract)	S-10X Production Software (Note – some simple overlays may be initially converted data) S-10X Validation Software (If Needed)	S-100 ECDIS
System Standards	S-100 Part 2 Management of IHO GI Registers S-100 Part 2a Feature Concept Dictionary Registers S-100 S-99	S-100 Part 5 Feature Catalogues S-100 Part 9 Portrayal (DIPWG) S-100	S-10X Product Specification S-100	
System Requirements				IMO Performance Standard
System Testing		S-100 Test Data (S-101 ENCs, Ess, S-10X data) S-100 and S-101 Test Scenarios + Cases Test Plan IHO Testing and Validation	Testing Enforced through Validation S-101 Validation Test Data Validation Tool Accreditation	IEC Test Standards IHO Test Data (S-64) ECDIS Type Approval

**Colour Coding for diagram**  
Text convention *italics* mean components which have been developed but are incomplete, **bold** text indicates items which have been tested and are complete. Underline indicates items not started. Unstyled text are items which are in development.

